

Favrile

I colori contrassegnati con la lettera "P" si intendono pronti all'uso. Le altre tinte di cartella sono ottenibili con sistema tintometrico Mixcolor di Novacolor, partendo dalla base Gold o Silver. I 4 colori FULL METAL sono pronti all'uso.

Colors marked with "P" are ready for use. Use the Mixcolor tinting system by Novacolor and the neutral Bases, Gold and Silver, to achieve all the colors shown in this chart. The 4 FULL METAL references are ready for use.



Favrile Gold



Favrile Silver



P 310



P 311



P 312



P 313



P 366



P 368



320 S



321 S



322 G



323 G



324 G



325 G



326 S



327 S



328 G



329 G



330 G



331 G



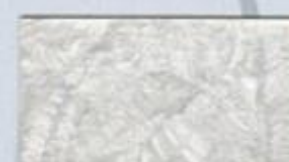
332 S



333 S



334 S



335 S

Favrile Full Metal



P 650 - Oro



P 660 - Argento



P 670 - Bronzo



P 680 - Rame

Favrile Metal

Tutti i colori presenti in cartella sono ottenuti dalla base FAVRILE METAL SILVER e sono contrassegnati con la lettera "S", salvo dove diversamente indicato. FAVRILE METAL è anche disponibile nella base GOLD: si raccomanda di controllare la tinta prima di applicarla, in quanto il pigmento GOLD modifica in maniera sostanziale la resa cromatica dei colori utilizzati.

All colours obtained from FAVRILE METAL SILVER, therefore marked with "S", if not differently specified. FAVRILE METAL is also available like GOLD neutral Base: it is strictly recommended to check final color before application, since the Gold pigment changes dramatically the chromatic yield of the colors.



Favrile Metal Gold



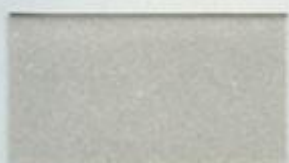
965 G



966 G



967 G



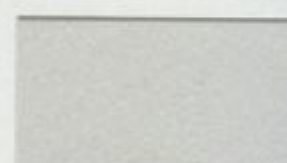
Favrile Metal Silver



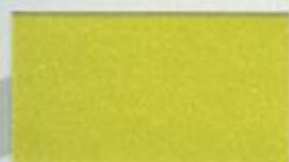
965 S



966 S



967 S



920 S



921 S



922 S



923 S



924 S



925 S



926 S



927 S



928 S



929 S



930 S



931 S



932 S



933 S



934 S



935 S



936 S



937 S



938 S



939 S



940 S



941 S



942 S



943 S



944 S



945 S



946 S



947 S



948 S



949 S



950 S



951 S



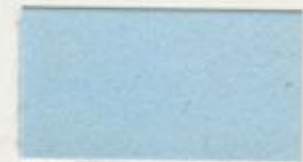
952 S



953 S



954 S



955 S



956 S



957 S



958 S



959 S



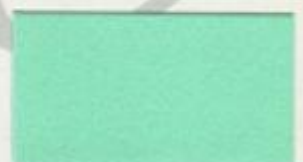
960 S



961 S



962 S



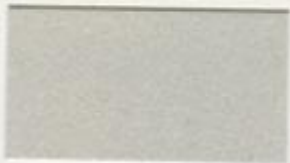
963 S



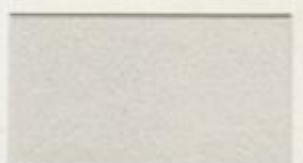
964 S



965 S



966 S



967 S