

novacolor™
I colori dell'Architettura

marmorino^{ks}

Finiture in calce per esterni ed interni - Mineral finishes for exteriors and interiors





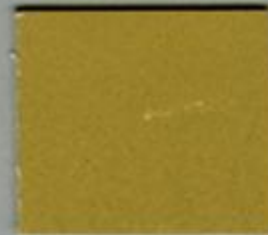
MKS 600*



MKS 603*



MKS 605



MKS 606*



MKS 601*



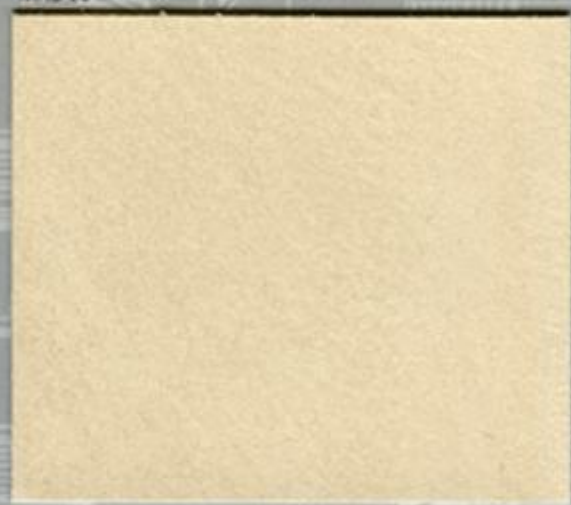
MKS 604*



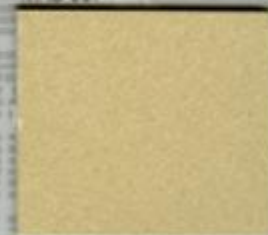
MKS 607



MKS 602*



MKS 609



MKS 608



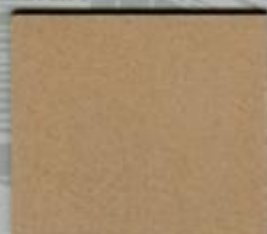
MKS 610



MKS 617



MKS 611



MKS 613



MKS 615



MKS 618



MKS 612*



MKS 614*



MKS 616*



MKS 619*



MKS 620*



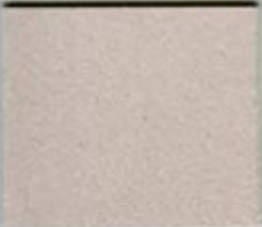
MKS 622*



MKS 625*



MKS 628*



MKS 621



MKS 623*



MKS 626



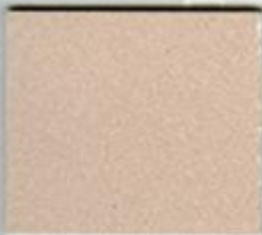
MKS 629



MKS 624



MKS 627



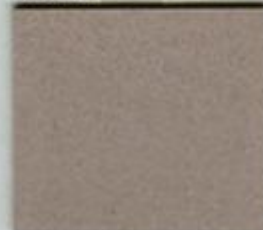
MKS 630



MKS 633



MKS 631



MKS 634



MKS 636



MKS 638*



MKS 632*



MKS 635*



MKS 637*



MKS 639*



MKS 640*



MKS 643



MKS 645*



MKS 647*



MKS 641



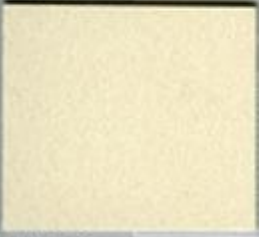
MKS 644



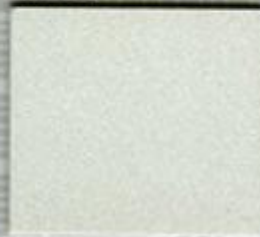
MKS 646



MKS 648



MKS 642



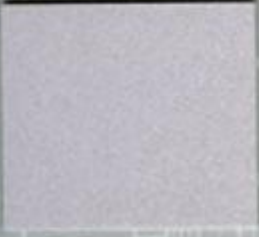
MKS 649

I colori contrassegnati con * non sono utilizzabili in esterni.

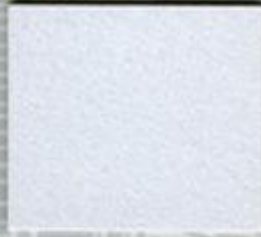
MARMORINO KS è a base di calcare, sono possibili leggere variazioni di colore tra le cariche a lotti diversi di produzione. Si consiglia di utilizzare sempre un unico lotto per ottenere un'opera.

Colours marked with * may NOT be used outside.

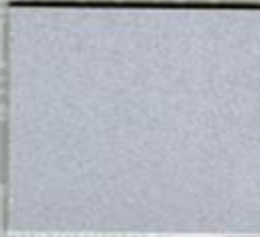
MARMORINO KS contains lime therefore slight colour variations between colour card and different batch numbers may always occur. It is highly recommended not to use different batch numbers to finish up the same surface.



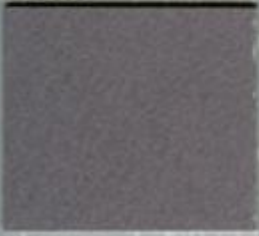
MKS 650*



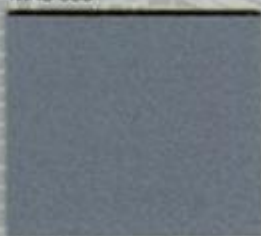
MKS 653



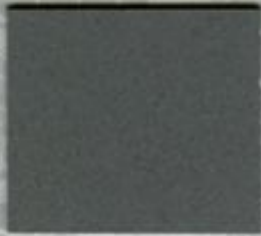
MKS 658



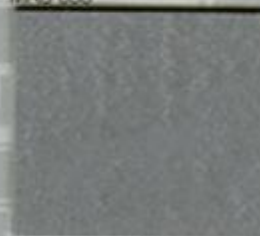
MKS 651*



MKS 654



MKS 656



MKS 659



MKS 652*



MKS 655*



MKS 657*



MKS 660*



MKS 546



MKS 014*



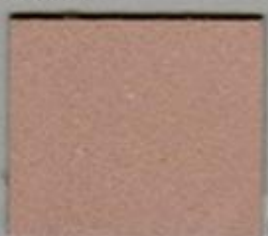
MKS 011*



MKS 562*



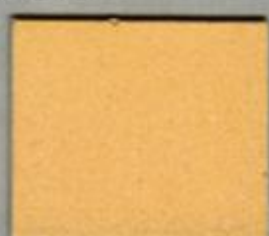
MKS 008*



MKS 554



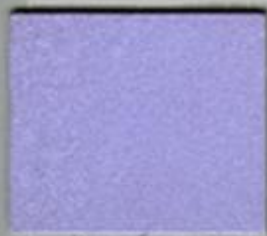
MKS 559



MKS 561*



MKS 547



MKS 548*



MKS 005*



MKS 549*



MKS 006*



MKS 003*



MKS 004*

I colori contrassegnati con * non sono utilizzabili in esterni.

MARMORINO KS è a base di calce; sono possibili leggere variazioni di colore tra la cartella e lotti diversi di produzione. Si consiglia di utilizzare sempre un unico lotto per ultimare un cantiere.

Colours marked with * may NOT be used outdoor.

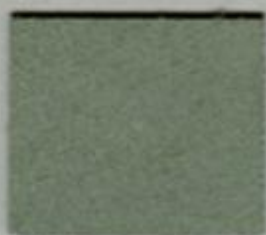
MARMORINO KS contains lime therefore slight colour variations between colour card and different batch numbers may always occur. It is highly recommended not to use different batch numbers to finish up the same surface.



MARMORINO KS MKS 572* METAL, con spatola di plastica



MKS 523*



MKS 022



MKS 021*



MKS 023*



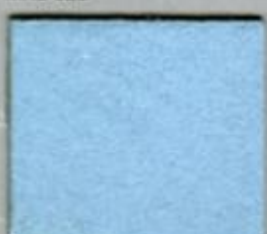
MKS 524*



MKS 036



MKS 026*



MKS 027*



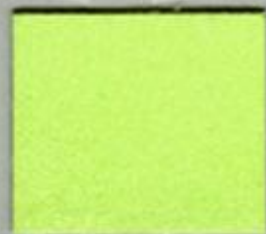
MKS 525*



MARMORINO KS MKS 568* a spatola con Cera Vitex neutra



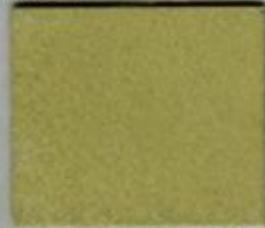
MKS 527*



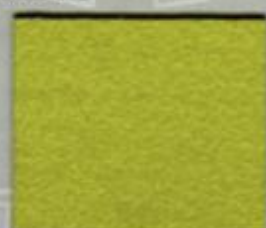
MKS 018*



MKS 035*



MKS 017*



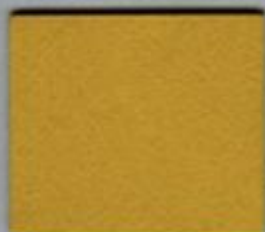
MKS 015*



MKS 016*



MKS 500*



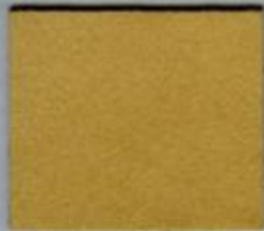
MKS 511*



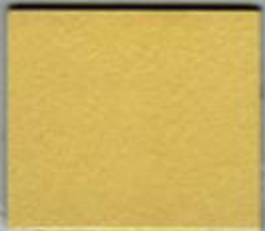
MKS 034*



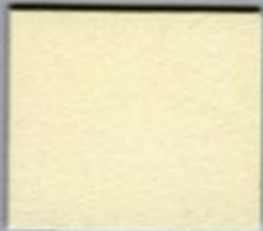
MKS 515*



MKS 501*



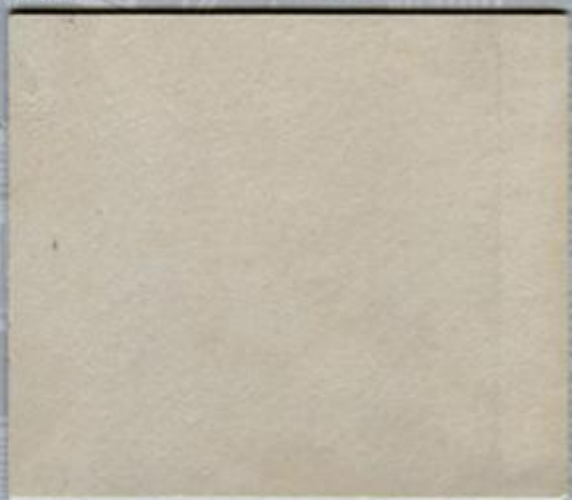
MKS 510



MKS 502



MKS 516*



MARMORINO KS MKS 509 a spatola con Cera Wax Gold



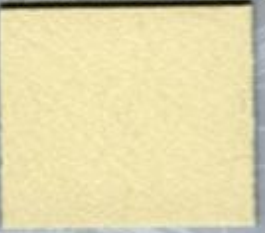
MKS 517*



MKS 518



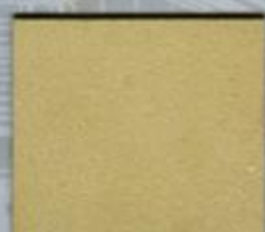
MKS 503



MKS 508



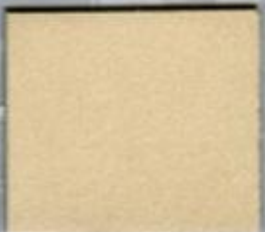
MKS 505



MKS 507



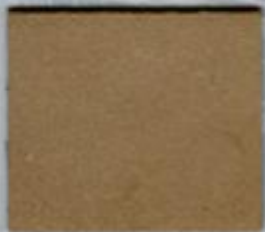
MKS 522



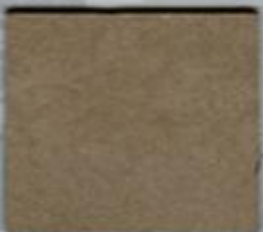
MKS 519



MKS 504



MKS 506



MKS 521



MKS 520